

How to join EPIM?

All operators of exploration permits, production and transport licenses and of joint ventures involved in activities on the NCS are regarded as participants from the date of signing the Cooperation Agreement with EPIM.

Relevant authorities and other relevant institutions can be invited to participate in work groups and/or as observers in EPIM's governing bodies.

Firstly, all operators on the NCS communicate through and store license data in LW. Getting access to LW is the company's first contact with EPIM.

Secondly, not all, but most operators also use EW and AW. Norwegian law instructs all operators on the NCS to report environmental information to the authorities. This is done yearly in EW.

Thirdly, the authorities urge the companies to use AW for electronic communication with the authorities.

Finally, EPIM safeguards and promotes the participants' shared interests in the defined reporting area, this being Daily Drilling Reports and Daily Production Reports. The offshore industry shall obtain high quality information from reliable, effective and efficient systems for reporting.

For operators intending to join EPIM

1. Visit www.epim.no or contact EPIM Manager
2. Read the Articles of Association thoroughly
3. Print out and sign the Cooperation Agreement
4. Print out and sign the Policy Documents
5. Send the original documents to EPIM Manager

EPIM assumes that the signed documents are supported by company management.

New company members will receive a confirmation of their participation and an invoice from EPIM.

Operators that have joined EPIM

Aker Exploration AS
BG Norge Limited
BP Norge AS
Centrica Energi
Chevron Norge
ConocoPhillips Norge
Dana Petroleum Norway AS
Det norske oljeselskap ASA
Discover Petroleum
Dong E&P Norge AS
E.On Ruhrgas Norge AS
Endeavour Energy Norge AS
Eni Norge AS
ExxonMobil E&P Norway AS
Gassco AS
Gaz de France Norge AS
Hess Norge AS
Idemitsu Petroleum Norge AS
Lotus Exploration and Production Norge AS
Lundin Norway AS
Maersk Oil Norway AS
Marathon Petroleum Company (Norway)
Nexen Exploration Norge AS
A/S Norske Shell
Norwegian Energy Company ASA
OMV (Norge) AS
Petro-Canada Norge AS
Premier Oil Norge AS
RWE Dea Norge
StatoilHydro ASA
Talisman Energy Norge AS
Total E&P Norge AS
Wintershall Norge

Contact information

Postal address: P.O. Box 8065, N-4068 Stavanger
Visiting address: Vassbotnen 1, N-4313 Sandnes
Phone: +47 51 84 65 00
Fax: +47 51 84 65 01
E-mail: mail@epim.no
Website: www.epim.no

Manager

Ove Ryland
E-mail: or@epim.no

(Revised March 2009)



EPIM

E&P Information Management Association

Introduction

The objective of EPIM is to utilize and make available IT solutions that facilitate the best possible flow of information between any and all of its users.

We welcome operators of exploration, production and transport licenses on the Norwegian Continental Shelf (NCS) to join EPIM as members. Licensees are also welcome to participate in user forums, work groups and projects. Relevant authorities and other relevant institutions can be invited to participate in work groups and/or as observers in EPIM's governing bodies.

EPIM is an administrative arrangement, organised as an association. The operation is based on the Articles of Association, on the non-profit principle.



To read more about EPIM and to download relevant documents, visit our website: www.epim.no

Organization

General Assembly

The General Assembly is EPIM's highest authority. In addition to general business, the General Assembly makes the major decisions, subject to approval by all members. Considered as major decisions are:

- Decisions to change main service providers
- Decisions that significantly change specifications of services, or functionality of applications central to the services
- Decisions with a significant impact on Participants' use of, or cost of usage of the services

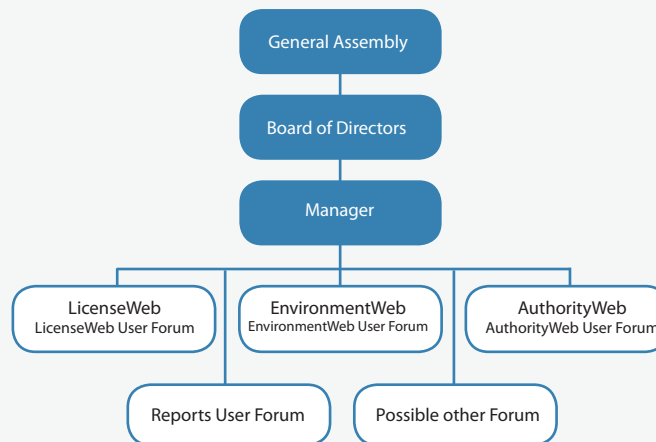
Board of Directors

Some of the issues to be considered by the Board are:

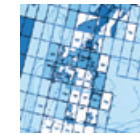
- Strategic work, budgets and work programmes
- The Board's report concerning the activities since the previous ordinary General Assembly
- The association's accounts for the previous year

Manager

The EPIM Manager is responsible for day-to-day operations.



Services



LicenseWeb

LicenseWeb (LW) is the official communication and archiving tool for administrative interaction between operators, partners and authorities for all licenses on the NCS.

The application is designed to meet the requirements for information handling as stated in the license agreements. It furthermore ensures efficient and secure management and use of LW by all parties using the solution through acceptance of, and adherence to, necessary principles defined in the LW Policy Document.



EnvironmentWeb

EnvironmentWeb (EW) is a national database for yearly reporting of emissions to air and discharges to sea from oil and gas activities on the NCS.

EW makes the gathering and systematization of the important environmental data much more effective. It saves the oil companies a lot of work and at the same time provides a far better tool to analyse trends regarding emissions to air and discharges to sea and to evaluate the effects on the environment.



AuthorityWeb

AuthorityWeb (AW) is a secure electronic transport channel for formal authority correspondence between the operators/ licensees, OLF and the relevant authorities (MPE, NPD, PSA).



Reports

Common reports to the authorities and to the partners in the drilling and production domains for all production licenses on the NCS, maintained and further enhanced by the Reports User Forum.

The reports shall reflect the offshore industry high safety, health and environmental standards and the required exploitation of resources.